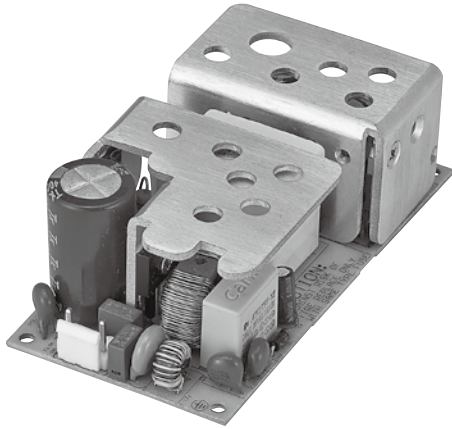


Single Output / Dual Output /
 Triple Output



Features

- CEC Compliance
- High Efficiency
- RoHS Compliance
- Over Voltage Protective Installation
- Over Current Protective Installation
- Short Circuit Protective Installation
- 100% Burn-In
- 100% Hi-Pot Tested
- MTBF > 100,000 hours

EPM V WWW XX Y Z

- V:** The number of output group
- WWW:** Total Power
- XX :** Main - Power voltage
- Y:** Secondary voltage coding
- Z:** Serial number

Electrical Specifications

MODEL NO.	OUTPUT POWER (W)	OUTPUT VOLTAGE (Vdc)	LOAD		LOAD REGULATION	RIPPLE & NOISE	
			MIN. (Io)	MAX. (I)			
Single Output	EPM1065XXYZ	65W	12, 15, 19, 24, 36, 48V		5.41A	± 3% Max.	± 2% Max.
	EPM1060XXYZ	60W	12, 15, 19, 24, 36, 48V		5A	± 3% Max.	± 2% Max.
	EPM1050XXYZ	50W	5, 12, 15, 19, 24, 36, 48V		10A	± 3% Max.	± 2% Max.
	EPM1045XXYZ	45W	5, 12, 15, 19, 24, 36, 48V		9A	± 3% Max.	± 2% Max.
	EPM1040XXYZ	40W	5, 12, 15, 19, 24, 36, 48V		8A	± 3% Max.	± 2% Max.
Dual Output	EPM2WWWXXYZ	30~65W	12, 15, 19, 24V	0.5	5.20A	± 5% Max.	± 2% Max.
			5V	0.5	4A	± 5% Max.	± 2% Max.
Triple Output	EPM3WWWXXYZ	45~65W	12, 24V	0.5	3.86A	± 5% Max.	± 2% Max.
			5V	0.5	4A	± 5% Max.	± 2% Max.
			-12V		0.3A		

NOTE:

- 1 : Ripple & Noise is measured by using 20MHz bandwidth limited oscilloscope and terminated each output with a 0.1uF ceramic capacitor & parallel with 47uF aluminum capacitor at full load and nominal line.
- 2 : Line regulation is defined by changing ±10% of input voltage from nominal line at rated load.
- 3 : Max. Power (W) ≥Vo x Io

Electrical Specifications

INPUT

- Input Range 90 -264Vac
- Input Current ≤1.5A
- Inrush Current ≤120A at 220V ac At cold start maximum load.
- Efficiency 80%~88% depends on models.
Meet CEC Level V.
- Turn On Time ≤3S

OUTPUT

- Over Voltage Protection Latch off or Auto Recovery
- Short Circuit Protection Auto Recovery
- Over Current Protection Auto Recovery

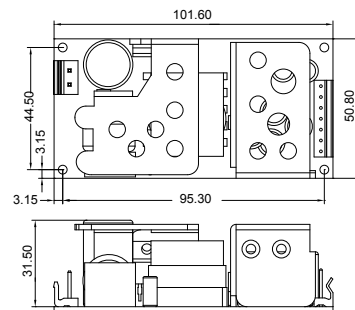
ENVIRONMENTAL

- Operating Temperature 0 to 50°C
- Storage Temperature -20 to 85°C
- Storage Humidity 5% to 95 %

SAFETY

- UL/CUL, TUV, CB, CE, FCC

Mechanical Specification



- Mechanical Size: 101.6 x 50.8 x 31.5 (mm)
- AC Input Connector: Molex 09-65-2048 or equivalent
- DC Output Connector: JST VH Series or equivalent
- Pin Assignment:

Single Output	P1-3	P4-6	P7	
	GND	5~48V	5V(option)	
Multi Output	P1	P2-3	P4-5	P6-7
	-12V	5V	GND	12~24V

- Weight: 200g

EPM1065 Series

Open Frame Medical Type

• 30~65Watts Max.

E PM V WWW XX Y Z



E	PM	V	WWW		XX		Y	Z
BUSINESS	TYPE	OUTPUT NUMBER	TOTAL POWER		MAIN - POWER VOLTAGE		0~9~A~Z	0~9~A~Z
EDAC	Medical Open Frame	1 2 3	030 040 045	050 065	05=5V 12=12V 15=15V 19=19V	24=24V 36=36V 48=48V	0=NA D=5V (0.5A) E=5V (2A~4A) T=5V+(-12V/0.3A)	0=NA 2=5V/2A 3=5V/3A 4=5V/4A

	MODEL NAME	MAIN - POWER			5V/0.5A- POWER			5V/2~4A POWER			-12V POWER			TOTAL POWER
		Vo1(V)	Io1(I)	Wo1(W)	Vo2(V)	Io2(I)	Wo2(W)	Vo2(V)	Io2(I)	Wo2(W)	Vo3(V)	Io3(I)	Wo3(W)	
Single output	EPM10651200	12	5.41	65										65
	EPM10651500	15	4.33	65										65
	EPM10651900	19	3.42	65										65
	EPM10652400	24	2.70	65										65
	EPM10653600	36	1.80	65										65
	EPM10654800	48	1.35	65										65
	EPM10601200	12	5.00	60										60
	EPM10601500	15	4.00	60										60
	EPM10601900	19	3.15	60										60
	EPM10602400	24	2.50	60										60
	EPM10603600	36	1.66	60										60
	EPM10604800	48	1.25	60										60
	EPM10500500	5	10.00	50										50
	EPM10501200	12	4.16	50										50
	EPM10501500	15	3.33	50										50
	EPM10501900	19	2.63	50										50
	EPM10502400	24	2.08	50										50
	EPM10503600	36	1.38	50										50
	EPM10504800	48	1.04	50										50
	EPM10450500	5	9.00	45										45
	EPM10451200	12	3.75	45										45
	EPM10451500	15	3.00	45										45
	EPM10451900	19	2.36	45										45
	EPM10452400	24	1.87	45										45
	EPM10453600	36	1.25	45										45
	EPM10454800	48	0.93	45										45
	EPM10400500	5	8.00	40										40
	EPM10401200	12	3.33	40										40
	EPM10401500	15	2.66	40										40
	EPM10401900	19	2.10	40										40
	EPM10402400	24	1.66	40										40
	EPM10403600	36	1.11	40										40
	EPM10404800	48	0.83	40										40
EPM10300500	5	6.00	30										30	
EPM10301200	12	2.50	30										30	
EPM10301500	15	2.00	30										30	
EPM10301900	19	1.57	30										30	
EPM10302400	24	1.25	30										30	

	MODEL NAME	MAIN - POWER			5V/0.5A- POWER			5V/2~4A POWER			-12V POWER			TOTAL POWER
		Vo1(V)	Io1(I)	Wo1(W)	Vo2(V)	Io2(I)	Wo2(W)	Vo2(V)	Io2(I)	Wo2(W)	Vo3(V)	IO3(I)	Wo3(W)	
Dual output	EPM206512D0	12	5.20	62.5	5	0.5	2.5							65
	EPM206515D0	15	4.16	62.5	5	0.5	2.5							65
	EPM206519D0	19	3.28	62.5	5	0.5	2.5							65
	EPM206524D0	24	2.60	62.5	5	0.5	2.5							65
	EPM206512E3	12	4.16	50				5	3	15				65
	EPM206524E3	24	2.08	50				5	3	15				65
	EPM206512E4	12	3.75	45				5	4	20				65
	EPM206524E4	24	1.87	45				5	4	20				65
	EPM205012D0	12	3.95	47.5	5	0.5	2.5							50
	EPM205015D0	15	3.16	47.5	5	0.5	2.5							50
	EPM205019D0	19	2.50	47.5	5	0.5	2.5							50
	EPM205024D0	24	1.97	47.5	5	0.5	2.5							50
	EPM205012E3	12	2.91	35				5	3	15				50
	EPM205024E3	24	1.45	35				5	3	15				50
	EPM205012E4	12	2.50	30				5	4	20				50
	EPM205024E4	24	1.25	30				5	4	20				50
	EPM204512D0	12	3.54	42.5	5	0.5	2.5							45
	EPM204515D0	15	2.83	42.5	5	0.5	2.5							45
	EPM204519D0	19	2.23	42.5	5	0.5	2.5							45
	EPM204524D0	24	1.77	42.5	5	0.5	2.5							45
	EPM204512E2	12	2.91	35				5	2	10				45
	EPM204524E2	24	1.45	35				5	2	10				45
	EPM204512E3	12	2.50	30				5	3	15				45
	EPM204524E3	24	1.25	30				5	3	15				45
	EPM204012D0	12	3.12	37.5	5	0.5	2.5							40
	EPM204015D0	15	2.50	37.5	5	0.5	2.5							40
	EPM204019D0	19	1.97	37.5	5	0.5	2.5							40
	EPM204024D0	24	1.56	37.5	5	0.5	2.5							40
	EPM204012E2	12	2.50	30				5	2	10				40
	EPM204024E2	24	1.25	30				5	2	10				40
EPM204012E3	12	2.08	25				5	3	15				40	
EPM204024E3	24	1.04	25				5	3	15				40	
EPM203012D0	12	2.29	27.5	5	0.5	2.5							30	
EPM203015D0	15	1.83	27.5	5	0.5	2.5							30	
EPM203019D0	19	1.44	27.5	5	0.5	2.5							30	
EPM203024D0	24	1.14	27.5	5	0.5	2.5							30	
EPM203012E2	12	1.66	20				5	2	10				30	
EPM203024E2	24	0.83	20				5	2	10				30	
Triple output	EPM306512T3	12	3.86	46.4				5	3	15	-12	0.3	3.6	65
	EPM306512T4	12	3.45	41.4				5	4	20	-12	0.3	3.6	65
	EPM305012T3	12	2.61	31.4				5	3	15	-12	0.3	3.6	50
	EPM305012T4	12	2.20	26.4				5	4	20	-12	0.3	3.6	50
	EPM304512T2	12	2.61	31.4				5	2	10	-12	0.3	3.6	45
	EPM304512T3	12	2.20	26.4				5	3	15	-12	0.3	3.6	45
	EPM306524T3	24	1.93	46.4				5	3	15	-12	0.3	3.6	65
	EPM306524T4	24	1.72	41.4				5	4	20	-12	0.3	3.6	65
	EPM305024T3	24	1.30	31.4				5	3	15	-12	0.3	3.6	50
	EPM305024T4	24	1.10	26.4				5	4	20	-12	0.3	3.6	50
	EPM304524T2	24	1.30	31.4				5	2	10	-12	0.3	3.6	45
	EPM304524T3	24	1.10	26.4				5	3	15	-12	0.3	3.6	45