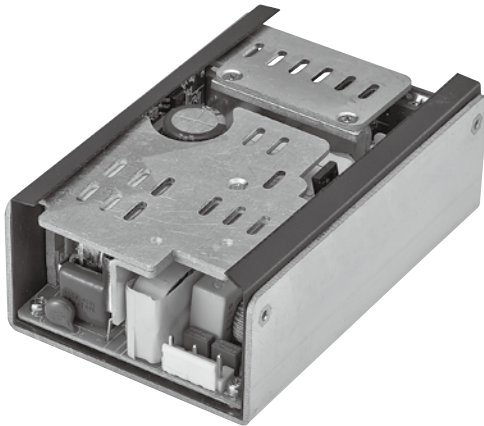


# EP1200U Series

Open Frame  
• 100~200Watts Max.

Single Output / Dual Output /  
Triple Output / Quad Output



## Features

- CEC Compliance
- High Efficiency
- RoHS Compliance
- Over Voltage Protective Installation
- Over Current Protective Installation
- Short Circuit Protective Installation
- 100% Burn-In
- 100% Hi-Pot Tested
- MTBF > 50,000 hours

## EP V WWW XX Y Z U

- V:** The number of output group  
**WWW:** Total Power  
**XX :** Main Power voltage  
**Y:** Secondary voltage coding  
**Z:** Serial number  
**U:** U-Bracket

## Electrical Specifications

MODEL NO.	OUTPUT POWER (W)	OUTPUT NO.	OUTPUT VOLTAGE (Vdc)	OUTPUT LOAD (A)	LOAD REGULATION	RIPPLE & NOISE
Single output	EP1WWWXXYZU	100~200W	Main Power	5~56V	2.59~20A	+/- 3% Max. 2% Max.
Dual output	EP2WWWXXYZU	100~180W	Main Power/DC-DC	5~56V	2.48~18.0A	+/- 3% Max. 2% Max.
			Stand-by or -12V	5Vsb or -12V	0~2A or 0~0.5A	+/- 3 or 10% Max. 2% Max.
Triple output	EP4WWWXXYZU	100~175W	Main Power	10~56V	2.63~13.3A	+/- 3% Max. 2% Max.
			Stand-by Power	5Vsb	0~2A	+/- 3% Max. 2% Max.
			DC-DC or -12V	5/12V or -12V	0~5A or 0~0.5A	+/- 3 or 10% Max. 2% Max.
Quad output	EP4WWWXXYZ	100~175W	Main Power	10~24V	3.0~11.16A	+/- 3% Max. 2% Max.
			DC - DC Power	5,12V	0~5A or 0~0.5A	+/- 3% Max. 2% Max.
			-12V Power	-12V	0~0.5A	+/- 10% Max. 2% Max.
			Stand-by Power	5Vsb	0~2A	+/- 3% Max. 2% Max.

### NOTE:

- 1 : Ripple & Noise is measured by using 20MHz bandwidth limited oscilloscope and terminated each output with a 0.1uF ceramic capacitor & parallel with 47uF aluminum capacitor at full load and nominal line.
- 2 : Line regulation is defined by changing  $\pm 10\%$  of input voltage from nominal line at rated load.
- 3 : Max. Power (W)  $\geq V_o \times I_o$

## Electrical Specifications

### INPUT

- Input Range 90 -264Vac
- Input Current  $\leq 2.5A$
- Inrush Current  $\leq 120A$  peak @220VAC, cold start@25°C
- Efficiency  $\geq 85\%$  depends on models.  
Meet CEC Level V.
- Turn On Time  $\leq 3S$

### OUTPUT

- Over Voltage Protection Latch off
- Short Circuit Protection Latch off
- Over Current Protection Latch off

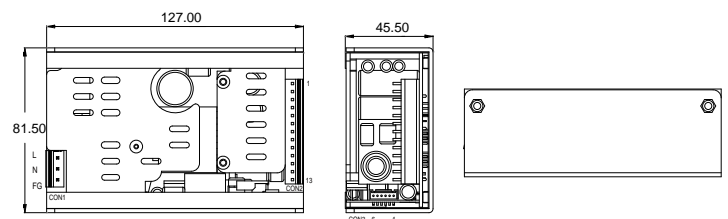
### ENVIRONMENTAL

- Operating Temperature 0 to 50°C
- Storage Temperature -20 to 85°C
- Storage Humidity 5% to 95 %

### SAFETY

- UL/CUL, TUV, CB, CE, FCC

## Mechanical Specification



- Mechanical Size: 127 x 81.5 x 45.5 (mm)
- AC Input Connector CON1 : JST/B5P-VH Series or equivalent
- DC Output Connector CON2 : JST/B13P-VH Series or equivalent
- DC Output Connector CON3 : CKM/20010203-6 or equivalent
- Pin Assignment:

CON1 :

P1	P3	P5
L	N	F.G

CON2 :

P1	P2-5	P6-9	P10-11	P12-13
Vout3	GND	Vout1	GND	Vout4

CON3 :

P1	P2	P3-4	P5-6
P.G/P.F	PS/ON	Vout2	GND

Open Frame  
• 100~200Watts Max.

# EP1200U Series

**E P V WWW XX Y Z U**



E	P	V	WWW	XX	Y	Z	U
BUSINESS	TYPE	NUMBER OF OUTPUT GROUP	TOTAL POWER	MAIN - POWER VOLTAGE	0~9~A~Z	0~9~A~Z	--
EDAC	ITE Open Frame	1~4	100~200	05=5V 24=24V 12=12V 36=36V 18=18V 48=48V 19=19V 56=56V	0=NA A= Stand by B = - 12V C=Standby+(- 12V)	0=NA A=5V/5A B=12V/5A	U-Bracket

MODEL NAME	MAIN- POWER			STAND BY- POWER			-12V POWER			DC TO DC POWER			TOTAL POWER
	Vo1(V)	Io1(I)	Wo1(W)	Vo2(V)	Io2(I)	Wo2(W)	Vo3(V)	Io3(I)	Wo3(W)	Vo4(V)	Io4(I)	Wo4(W)	
EP11000500U	5	20.00	100										100
EP11100900U	9	12.22	110										110
EP11350900U	9	15.00	135										135
EP11251000U	10	12.50	125										125
EP11501000U	10	15.00	150										150
EP11251100U	11	11.36	125										125
EP11651100U	11	15.00	165										165
EP11501200U	12	12.50	150										150
EP115012E0U	12	12.50	150										150
EP11801200U	12	15.00	180										180
EP11251500U	15	8.33	125										125
EP11501500U	15	10.00	150										150
EP11251600U	16	7.81	125										125
EP11501600U	16	9.37	150										150
EP11501700U	17	8.23	150										150
EP11751700U	17	10.00	175										175
EP11351800U	18	7.50	135										135
EP11501800U	18	8.33	150										150
EP11801800U	18	10.00	180										180
EP11501900U	19	7.89	150										150
EP11801900U	19	9.47	180										180
EP12001900U	19	10.52	200										200
EP11352200U	22	6.13	135										135
EP11502200U	22	6.81	150										150
EP11802200U	22	8.18	180										180
EP11402300U	23	6.08	140										140
EP11502300U	23	6.52	150										150
EP11802300U	23	7.82	180										180
Single output EP11502400U	24	6.25	150										150
EP11802400U	24	7.50	180										180
EP12002400U	24	8.33	200										200
EP11403400U	34	4.11	140										140
EP11503400U	34	4.41	150										150
EP11803400U	34	5.29	180										180
EP11403500U	35	4.00	140										140
EP11503500U	35	4.28	150										150
EP11953500U	35	5.57	180										195
EP11503600U	36	4.16	150										150
EP11803600U	36	5.00	180										180
EP12003600U	36	5.56	200										200
EP11404600U	46	3.04	140										140
EP11504600U	46	3.26	150										150
EP11804600U	46	3.91	180										180
EP11404700U	47	2.97	140										140
EP11504700U	47	3.19	150										150
EP11804700U	47	3.83	180										180
EP11504800U	48	3.12	150										150
EP11804800U	48	3.75	180										180
EP12004800U	48	4.16	200										200
EP11405400U	54	2.59	140										140
EP11505400U	54	2.77	150										150
EP11805400U	54	3.33	180										180
EP11455500U	55	2.63	145										145
EP11505500U	55	2.72	150										150
EP11805500U	55	3.27	180										180
EP11505600U	56	2.67	150										150
EP11805600U	56	3.21	180										180
EP12005600U	56	3.57	200										200

# EP1200U Series

Open Frame  
• 100~200Watts Max.

MODEL NAME	MAIN- POWER			STAND BY- POWER			-12V POWER			DC TO DC POWER			TOTAL POWER
	Vo1(V)	Io1(I)	Wo1(W)	Vo2(V)	Io2(I)	Wo2(W)	Vo3(V)	Io3(I)	Wo3(W)	Vo4(V)	Io4(I)	Wo4(W)	
EP210005A0U	5	18.00	90	5	2	10							100
EP211509A0U	9	11.67	105	5	2	10							115
EP213809A0U	9	14.17	128	5	2	10							138
EP212610A0U	10	11.60	116	5	2	10							126
EP215210A0U	10	14.17	142	5	2	10							152
EP213811A0U	11	11.63	128	5	2	10							138
EP216611A0U	11	14.17	156	5	2	10							166
EP215012A0U	12	11.67	140	5	2	10							150
EP218012A0U	12	14.16	170	5	2	10							180
EP212015A0U	15	7.33	110	5	2	10							120
EP214415A0U	15	8.95	134	5	2	10							144
EP212716A0U	16	7.31	117	5	2	10							127
EP215316A0U	16	8.95	143	5	2	10							153
EP213517A0U	17	7.35	125	5	2	10							135
EP216317A0U	17	8.95	152	5	2	10							162
EP214218A0U	18	7.33	132	5	2	10							142
EP217118A0U	18	8.95	161	5	2	10							171
EP215019A0U	19	7.36	140	5	2	10							150
EP218019A0U	19	8.94	170	5	2	10							180
EP213822A0U	22	5.81	128	5	2	10							138
EP216622A0U	22	7.08	156	5	2	10							166
EP214423A0U	23	5.82	134	5	2	10							144
EP217323A0U	23	7.08	163	5	2	10							173
EP215024A0U	24	5.83	140	5	2	10							150
EP218024A0U	24	7.08	170	5	2	10							180
EP214234A0U	34	3.88	132	5	2	10							142
EP217034A0U	34	4.72	160	5	2	10							170
EP214535A0U	35	3.85	135	5	2	10							145
EP217535A0U	35	4.72	165	5	2	10							175
EP215036A0U	36	3.88	140	5	2	10							150
EP218036A0U	36	4.72	170	5	2	10							180
EP214346A0U	46	2.89	133	5	2	10							143
EP217346A0U	46	3.54	163	5	2	10							173
EP214547A0U	47	2.87	135	5	2	10							145
EP217647A0U	47	3.54	166	5	2	10							176
EP215048A0U	48	2.91	140	5	2	10							150
EP218048A0U	48	3.54	170	5	2	10							180
EP214454A0U	54	2.48	134	5	2	10							144
EP217454A0U	54	3.04	164	5	2	10							174
EP214755A0U	55	2.49	137	5	2	10							147
EP217755A0U	55	3.03	167	5	2	10							177
EP215056A0U	56	2.50	140	5	2	10							150
EP218056A0U	56	3.03	170	5	2	10							180
EP215012B0U	12	12.00	144				-12	0.5	6				150
EP218012B0U	12	14.50	174				-12	0.5	6				180
EP215019B0U	19	7.57	144				-12	0.5	6				150
EP218019B0U	19	9.15	174				-12	0.5	6				180
EP215024B0U	24	6.00	144				-12	0.5	6				150
EP218024B0U	24	7.25	174				-12	0.5	6				180
EP218024DBU	24	6.00	144							12	3	36	180
EP215036B0U	36	4.00	144				-12	0.5	6				150
EP218036B0U	36	4.83	174				-12	0.5	6				180
EP215048B0U	48	3.00	144				-12	0.5	6				150
EP218048B0U	48	3.62	174				-12	0.5	6				180
EP215056B0U	56	2.57	144				-12	0.5	6				150
EP218056B0U	56	3.10	174				-12	0.5	6				180
EP313010AAU	10	9.50	95	5	2	10				5	5	25	130
EP315010AAU	10	11.50	115	5	2	10				5	5	25	150
EP314011AAU	11	9.54	105	5	2	10				5	5	25	140
EP315011AAU	11	10.45	115	5	2	10				5	5	25	150
EP315012AAU	12	9.58	115	5	2	10				5	5	25	150
EP317512AAU	12	11.66	140	5	2	10				5	5	25	175
EP312215AAU	15	5.80	87	5	2	10				5	5	25	122
EP314615AAU	15	7.40	111	5	2	10				5	5	25	146
EP312816AAU	16	5.81	93	5	2	10				5	5	25	128
EP315316AAU	16	7.37	118	5	2	10				5	5	25	153
EP313517AAU	17	5.88	100	5	2	10				5	5	25	135

Dual output

Triple output

Open Frame  
• 100~200Watts Max.

# EP1200U Series

MODEL NAME	MAIN- POWER			STAND BY- POWER			-12V POWER			DC TO DC POWER			TOTAL POWER
	Vo1(V)	Io1(I)	Wo1(W)	Vo2(V)	Io2(I)	Wo2(W)	Vo3(V)	Io3(I)	Wo3(W)	Vo4(V)	Io4(I)	Wo4(W)	
EP316017AAU	17	7.37	125	5	2	10				5	5	25	160
EP314218AAU	18	5.94	107	5	2	10				5	5	25	142
EP316818AAU	18	7.38	133	5	2	10				5	5	25	168
EP314518ABU	18	4.16	75	5	2	10				12	5	60	145
EP316818ABU	18	5.44	98	5	2	10				12	5	60	168
EP315019AAU	19	6.05	115	5	2	10				5	5	25	150
EP317519AAU	19	7.36	140	5	2	10				5	5	25	175
EP315019ABU	19	4.21	80	5	2	10				12	5	60	150
EP317519ABU	19	5.52	105	5	2	10				12	5	60	175
EP314022AAU	22	4.77	105	5	2	10				5	5	25	140
EP315022AAU	22	5.22	115	5	2	10				5	5	25	150
EP314122ABU	22	3.22	71	5	2	10				12	5	60	141
EP316522ABU	22	4.31	95	5	2	10				12	5	60	165
EP314523AAU	23	4.78	110	5	2	10				5	5	25	145
EP316823AAU	23	5.78	133	5	2	10				5	5	25	168
EP314523ABU	23	3.26	75	5	2	10				12	5	60	145
EP317023ABU	23	4.34	100	5	2	10				12	5	60	170
EP315024AAU	24	4.79	115	5	2	10				5	5	25	150
EP317524AAU	24	5.83	140	5	2	10				5	5	25	175
EP315024ABU	24	3.33	80	5	2	10				12	5	60	150
EP317524ABU	24	4.37	105	5	2	10				12	5	60	175
EP312510COU	10	10.90	109	5	2	10	-12	0.5	6				125
EP314910COU	10	13.30	133	5	2	10	-12	0.5	6				149
EP313511COU	11	10.81	119	5	2	10	-12	0.5	6				135
EP316211COU	11	13.27	146	5	2	10	-12	0.5	6				162
EP315012COU	12	11.16	134	5	2	10	-12	0.5	6				150
EP317512COU	12	13.25	159	5	2	10	-12	0.5	6				175
EP312015COU	15	6.93	104	5	2	10	-12	0.5	6				120
EP314215COU	15	8.40	126	5	2	10	-12	0.5	6				142
EP312516COU	16	6.81	109	5	2	10	-12	0.5	6				125
EP315016COU	16	8.37	134	5	2	10	-12	0.5	6				150
EP313517COU	17	7.00	119	5	2	10	-12	0.5	6				135
EP315817COU	17	8.37	142	5	2	10	-12	0.5	6				158
EP314218COU	18	7.00	126	5	2	10	-12	0.5	6				142
EP316718COU	18	8.38	151	5	2	10	-12	0.5	6				167
EP315019COU	19	7.05	134	5	2	10	-12	0.5	6				150
EP317519COU	19	8.36	159	5	2	10	-12	0.5	6				175
EP313522COU	22	5.40	119	5	2	10	-12	0.5	6				135
EP316222COU	22	6.63	146	5	2	10	-12	0.5	6				162
EP314023COU	23	5.39	124	5	2	10	-12	0.5	6				140
EP316823COU	23	6.63	152	5	2	10	-12	0.5	6				168
EP315024COU	24	5.58	134	5	2	10	-12	0.5	6				150
EP317524COU	24	6.62	159	5	2	10	-12	0.5	6				175
EP314034COU	34	3.64	124	5	2	10	-12	0.5	6				140
EP315034COU	34	3.94	134	5	2	10	-12	0.5	6				150
EP314035COU	35	3.54	124	5	2	10	-12	0.5	6				140
EP315035COU	35	3.82	134	5	2	10	-12	0.5	6				150
EP315036COU	36	3.72	134	5	2	10	-12	0.5	6				150
EP317536COU	36	4.41	159	5	2	10	-12	0.5	6				175
EP314046COU	46	2.69	124	5	2	10	-12	0.5	6				140
EP315046COU	46	2.91	134	5	2	10	-12	0.5	6				150
EP314047COU	47	2.63	124	5	2	10	-12	0.5	6				140
EP315047COU	47	2.85	134	5	2	10	-12	0.5	6				150
EP315048COU	48	2.79	134	5	2	10	-12	0.5	6				150
EP317548COU	48	3.54	159	5	2	10	-12	0.5	6				175
EP314054COU	54	3.82	124	5	2	10	-12	0.5	6				140
EP316954COU	54	3.72	153	5	2	10	-12	0.5	6				169
EP314555COU	55	4.41	129	5	2	10	-12	0.5	6				145
EP317255COU	55	2.69	156	5	2	10	-12	0.5	6				172
EP315056COU	56	2.91	134	5	2	10	-12	0.5	6				150
EP317556COU	56	2.63	159	5	2	10	-12	0.5	6				175

Triple  
output

# EP1200U Series

Open Frame  
• 100~200Watts Max.

MODEL NAME	MAIN- POWER			STAND BY- POWER			-12V POWER			DC TO DC POWER			TOTAL POWER
	Vo1(V)	Io1(I)	Wo1(W)	Vo2(V)	Io2(I)	Wo2(W)	Vo3(V)	Io3(I)	Wo3(W)	Vo4(V)	Io4(I)	Wo4(W)	
EP413010CAU	10	8.90	89	5	2	10	-12	0.5	6	5	5	25	130
EP415010CAU	10	10.90	109	5	2	10	-12	0.5	6	5	5	25	150
EP414011CAU	11	9.00	99	5	2	10	-12	0.5	6	5	5	25	140
EP415011CAU	11	9.90	109	5	2	10	-12	0.5	6	5	5	25	150
EP415012CAU	12	9.08	109	5	2	10	-12	0.5	6	5	5	25	150
EP417512CAU	12	11.60	134	5	2	10	-12	0.5	6	5	5	25	175
EP412715CAU	15	5.73	86	5	2	10	-12	0.5	6	5	5	25	127
EP414615CAU	15	7.00	105	5	2	10	-12	0.5	6	5	5	25	146
EP413216CAU	16	5.68	91	5	2	10	-12	0.5	6	5	5	25	132
EP415316CAU	16	7.00	112	5	2	10	-12	0.5	6	5	5	25	153
EP415017CAU	17	6.41	109	5	2	10	-12	0.5	6	5	5	25	150
EP416017CAU	17	7.00	119	5	2	10	-12	0.5	6	5	5	25	160
EP414418CAU	18	5.72	103	5	2	10	-12	0.5	6	5	5	25	144
EP416718CAU	18	7.00	126	5	2	10	-12	0.5	6	5	5	25	167
EP414618CAU	18	3.88	70	5	2	10	-12	0.5	6	12	5	60	146
EP416818CAU	18	5.11	92	5	2	10	-12	0.5	6	12	5	60	168
EP415019CAU	19	5.73	109	5	2	10	-12	0.5	6	5	5	25	150
EP417519CAU	19	7.05	134	5	2	10	-12	0.5	6	5	5	25	175
EP415019CBU	19	4.36	74	5	2	10	-12	0.5	6	12	5	60	150
EP417519CBU	19	5.21	99	5	2	10	-12	0.5	6	12	5	60	175
EP414022CAU	22	4.50	99	5	2	10	-12	0.5	6	5	5	25	140
EP416222CAU	22	5.50	121	5	2	10	-12	0.5	6	5	5	25	162
EP414322CAU	22	3.04	67	5	2	10	-12	0.5	6	12	5	60	143
EP416622CAU	22	4.09	90	5	2	10	-12	0.5	6	12	5	60	166
EP414523CAU	23	4.52	104	5	2	10	-12	0.5	6	5	5	25	145
EP416823CAU	23	5.52	127	5	2	10	-12	0.5	6	5	5	25	168
EP414523CAU	23	3.00	69	5	2	10	-12	0.5	6	12	5	60	145
EP417123CAU	23	4.13	95	5	2	10	-12	0.5	6	12	5	60	171
EP415024CAU	24	4.54	109	5	2	10	-12	0.5	6	5	5	25	150
EP417524CAU	24	5.58	134	5	2	10	-12	0.5	6	5	5	25	175
EP415024CBU	24	3.08	74	5	2	10	-12	0.5	6	12	5	60	150
EP417524CBU	24	4.12	99	5	2	10	-12	0.5	6	12	5	60	175

Quad output